



GAT MONTHLY MEMBERSHIP PROGRESS REPORT

Results as of: 4/30/2022

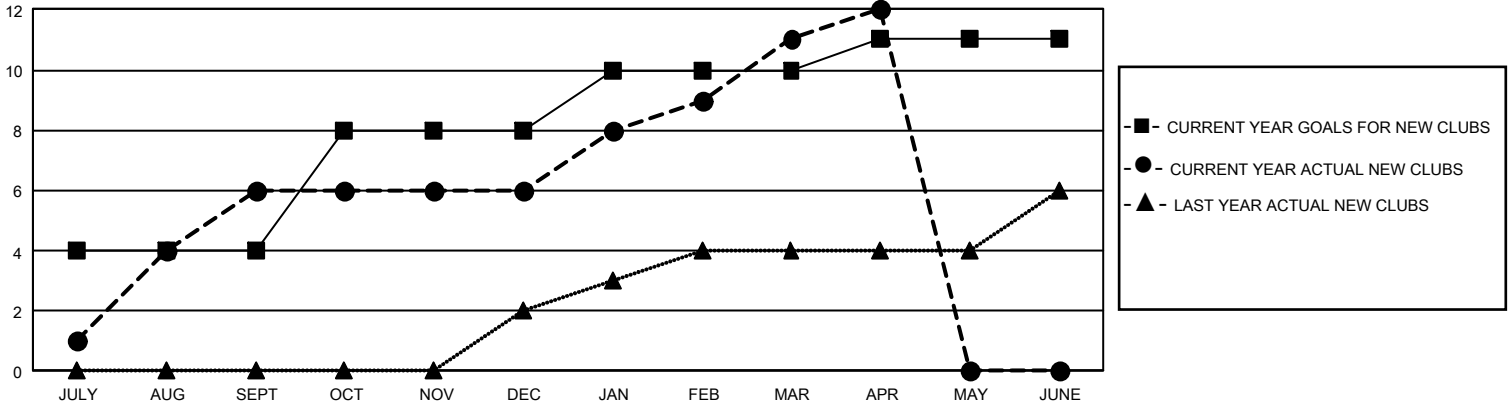
GMT Constitutional Area 5 - E, Group P

REPORT DOES NOT INCLUDE CLUBS IN UNDISTRICTED AREAS.

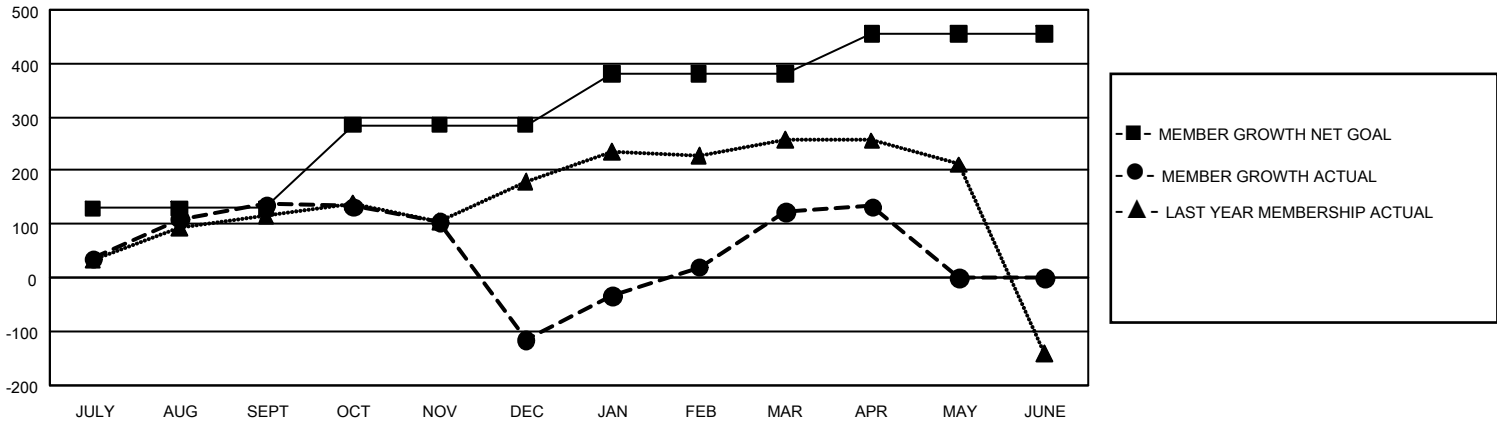
Clubs			
RESULTS FOR 2021-2022			
QUARTER	NEW CLUB GOAL	NEW CLUBS	DROPPED CLUBS
JULY/AUG/SEPT	12	6	1
OCT/NOV/DEC	12	0	2
JAN/FEB/MAR	6	5	1
APR/MAY/JUNE	3	1	0

Members			
RESULTS FOR 2021-2022			
QUARTER	MEMBER GROWTH NET GOAL	MEMBER GROWTH ACTUAL	DROPPED MEMBERS ACTUAL (including transfers)
JULY/AUG/SEPT	130	266	115
OCT/NOV/DEC	155	128	363
JAN/FEB/MAR	95	367	103
APR/MAY/JUNE	75	60	46

GOALS AND ACTUAL NEW CLUBS CUMULATIVE



GOALS AND ACTUAL MEMBERS CUMULATIVE



DROPPED CLUBS: 4	143 CLUBS OF 308 ADDED 1 OR MORE NEW MEMBERS	<u>GENDER DISTRIBUTION</u>	
<u>DROPPED MEMBERS</u>		MALE	3,666 (49.89%)
DECEASED	41	FEMALE	3,682 (50.11%)
CLUB CANCELLED	47	NON BINARY	0 (0.00%)
OTHER	539	PREFER NOT TO ANSWER	0 (0.00%)
TOTAL	627	TOTAL FAMILY UNIT MEMBERS	514
	CLICK HERE FOR CUMULATIVE MEMBERSHIP DATA	FAMILY MEMBERS PAYING HALF DUES	279